

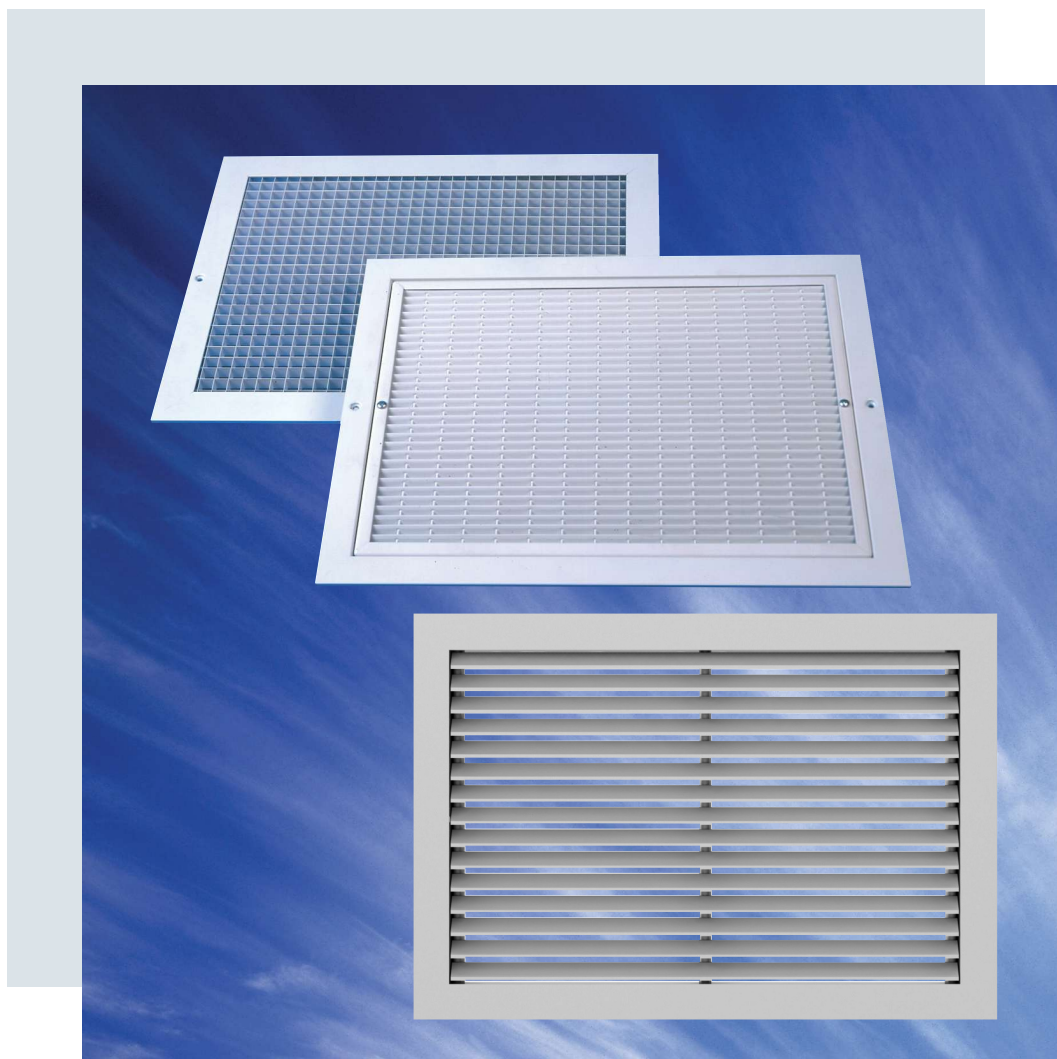
Mesavent.

COLMAN
Air Distribution

ENGINEERED AIR PRODUCTS

RETURN AIR GRILLES

G SERIES



G

SERIES

RETURN AIR GRILLES

G SERIES

QUALITY AND EFFICIENCY
WITHOUT COMPROMISE

Application:

Colman's range of Return Air Grilles have been designed to complement our Supply Diffusers for both side wall and ceiling applications. The range is available in a wide variety of styles and sizes to suit individual application requirements.

Description:

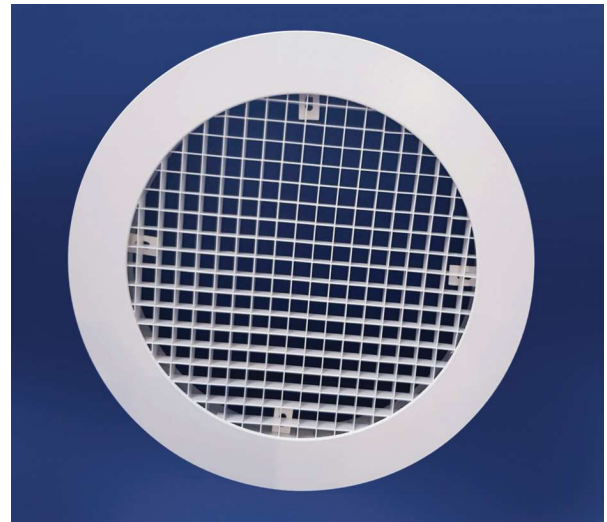
With three standard frames and four styles of core, the range provides a flexible group of grilles to meet most functional and installation requirements.

Grilles utilising our 'B' style frame have integral cores++ which are retained by spring clips on the rear of the extrusion, whilst the 'H' style houses the core in a U channel panel frame, removable from the face and allowing access to the duct without having to remove the whole grille.

Fixings:



The most common method for fixing our range of Return Air Grilles is screw fixing through the flange face (method G) or through the flange neck (method A). However, to suit the wide selection of products within this range a number of alternative standard fixing arrangements are available, see the product coding section of this brochure for additional information.



Colman can manufacture circular eggcrates to suit standard duct sizes.



All models are available with opposed blade volume control dampers operable from the face of the grille and sealing gasket is available as an option.

Finish:

Return Air Grilles are available as standard in powder coated RAL 9010 Matt White.

Grilles which are manufactured totally from aluminium are also available in a natural anodised finish, please contact sales office for availability.

Please refer to the product coding section of this brochure for a list of other standard finishes. Special finishes are available upon request.

All grilles are pre-treated utilising a six stage phosphate conversion process conforming to ISO 9171 prior to being powder coated in accordance with BS6496.

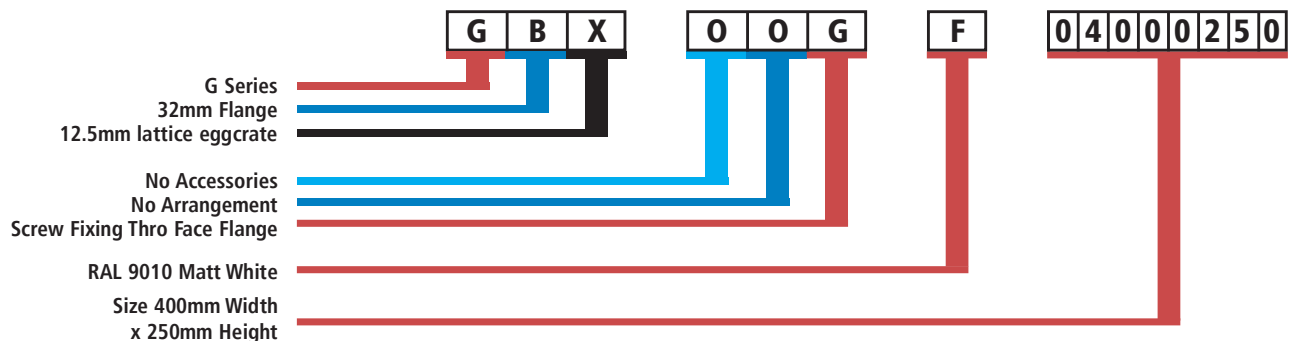
Options and Order Codes

Return Air Grilles

1	2 FRAME	3 CORE	4 ACCESSORIES	5 ARRANGEMENT	6 FIXING	7 FINISH
G	0 Core only B 32mm frame for fixed core H 25mm frame for removable core U Channel	F Aluminium bar set at 45° V Steel non-vision X 12.5mm aluminium lattice	0 None V Face operated volume control damper X Face operated volume control damper (painted matt black)	0 None A 100mm dia top conversion B 125mm dia top conversion C 150mm dia top conversion D 200mm dia top conversion E 250mm dia top conversion F 300mm dia top conversion G 350mm dia top conversion H 400mm dia top conversion J 450mm dia top conversion K 500mm dia top conversion L 100mm sq top conversion M 125mm sq top conversion N 150mm sq top conversion P 200mm sq top conversion Q 250mm sq top conversion R 350mm sq top conversion T 400mm sq top conversion V 450mm sq top conversion W 500mm sq top conversion 1 Special CC Circular	0 None A Screw fixing thro neck D Universal extended bracket G Screw fixing thro flange H Hanger bkt Ceur 1140 S Steel hanger bkt fitted to conversion U Universal bracket X Extended hanger bracket	0 Mill finish F Ral 9010 Matt white A Anodised 9 Satin anodised 8 Matt black C BS00E55 Gloss H BS00E55 Satin D BS00E55 Matt E Ral 9010 Gloss G Ral 9010 Satin 3 Ral 9006 Aluminium 1 Special colours
	Note see product data sheet for frame sizes.	Note see product data sheet for frame sizes.	Note damper not available with circular grille.		Note 1/ Code D for diffuser with VCD's only. 2/ Code D, E, H, U, X to be used only with B frame. 3/ Code S or G to be used with B, H, frame when conversion required.	Note A and 9 can only be used with aluminium cores.

Note: The items shown in red print above and below in the code example are the standard option for this product. Unless shown otherwise on any quotation or order the units will be supplied in this configuration.

Example of Order Codes



Plenum Boxes

1	2 LINING	3 INSTALLATION	4 ACCESSORIES	5 ARRANGEMENT	6 SPIGOT TYPE	7 SPIGOT SIZE
G	L Lined (6mm Bestobell) N Unlined	0 None U Universal brackets	0 None M Mono blade cord operated damper N Mono blade cord operated damper painted matt black (internally only) P No accessories painted matt black (internally only)	E Extract	R Round - Side entry S Square - Side entry T Round - Top entry W Round - Flush with top of unit X Square - Flush with top of unit Y Square - Top entry 1 Special	A 100 B 125 C 150 D 200 E 250 F 300 G 350 H 400 J 450 K 500 L 160 M 180 N 224 P 280 R 315 S 355 1 Special
			Note: Max size mono blade 400 dia 350sq			

Performance Data

X Core Return								
Air Volume m³/s	Face Velocity (m/s)							
	2		2.5		3		4	
	m²	NR	m²	NR	m²	NR	m²	NR
.05	.025	-	.02	-	.017	16	.013	25
.075	.038	-	.03	-	.025	18	.019	26
.10	.05	-	.04	-	.033	18	.025	28
.125	.063	-	.05	-	.042	19	.031	29
.15	.075	-	.06	-	.05	21	.038	29
.175	.088	-	.07	16	.058	21	.044	30
.20	.10	-	.08	17	.067	22	.05	30
.25	.125	-	.10	17	.083	23	.063	31
.30	.15	-	.12	18	.10	24	.075	32
.35	.175	-	.14	19	.117	24	.088	33
.40	.20	-	.16	20	.133	25	.10	34
.45	.225	-	.18	20	.15	25	.113	34
.50	.25	-	.20	21	.167	26	.125	35
.60	.30	-	.24	21	.20	27	.15	35
.70	.35	-	.28	22	.233	27	.175	36
.80	.40	-	.32	23	.267	28	.20	37
.90	.45	-	.36	23	.30	28	.225	37
1.00	.50	16	.40	24	.333	29	.25	38
1.25	.625	17	.50	25	.417	30	.313	39
1.50	.75	17	.60	25	.50	31	.375	39
1.75	.875	18	.70	26	.583	31	.438	40
2.00	1.00	19	.80	27	.667	32	.50	40

Pressure Drop Data			
Face Velocity (m/s)	Core Style		
	F Core	X Core	V Core
0.5	1	1	2
1	3	2	9
1.5	7	4	20
2	13	7	35
2.5	22	12	
3	30	17	
3.5	42	23	
4	53	29	
4.5	71	37	
5	88	46	

The face velocity through return grilles with 'V' core should not exceed 2m/s.

These data tables should be used in conjunction with the relevant core area chart.

NR Ratings and Core Areas

F Core Return								
Air Volume m³/s	Face Velocity (m/s)							
	1.5		2		2.5		3	
	m²	NR	m²	NR	m²	NR	m²	NR
.075	.050	-	.038	23	.030	28	.025	31
.100	.067	-	.050	23	.040	28	.033	32
.125	.083	-	.063	24	.050	29	.042	33
.150	.100	-	.075	24	.060	29	.050	33
.175	.117	-	.088	25	.070	30	.058	34
.200	.133	-	.100	25	.080	30	.067	34
.250	.167	-	.125	26	.100	31	.083	35
.300	.200	19	.150	26	.120	31	.100	35
.350	.233	19	.175	27	.140	32	.117	36
.400	.267	20	.200	27	.160	32	.133	36
.450	.300	21	.225	27	.180	33	.150	37
.500	.333	21	.250	28	.200	33	.167	38
.550	.367	22	.275	28	.220	33	.183	38
.600	.400	22	.300	29	.240	34	.200	39
.650	.433	23	.325	29	.260	34	.217	39

Return Air Grille - Core Area Chart

Height	B & H Frame Core Areas										Width							
	150	200	300	400	500	600	700	800	900	1000	1100	1200	1400	1600	1800	2000	2200	2400
75	0.01	0.01	0.01	0.02	0.02	0.03	0.03	0.04	0.04	0.05	0.05	0.06	0.07	0.08	0.09	0.10	0.11	0.12
100	0.01	0.01	0.02	0.03	0.04	0.04	0.05	0.06	0.07	0.07	0.08	0.09	0.10	0.12	0.13	0.15	0.17	0.18
150	0.02	0.02	0.03	0.05	0.06	0.07	0.09	0.10	0.11	0.12	0.14	0.15	0.17	0.20	0.22	0.25	0.27	0.30
200		0.03	0.05	0.07	0.08	0.10	0.12	0.14	0.15	0.17	0.19	0.21	0.24	0.28	0.31	0.35	0.38	0.42
250			0.06	0.08	0.11	0.13	0.15	0.18	0.20	0.22	0.24	0.27	0.31	0.36	0.40	0.45	0.49	0.54
300			0.08	0.10	0.13	0.16	0.19	0.21	0.24	0.27	0.30	0.32	0.38	0.43	0.49	0.55	0.60	0.66
350				0.12	0.16	0.19	0.22	0.25	0.29	0.32	0.35	0.38	0.45	0.51	0.58	0.64	0.71	0.77
400				0.14	0.18	0.22	0.25	0.29	0.33	0.37	0.40	0.44	0.52	0.59	0.67	0.74	0.82	0.89
450					0.20	0.25	0.29	0.33	0.37	0.42	0.46	0.50	0.59	0.67	0.76	0.84	0.93	1.01
500					0.23	0.27	0.32	0.37	0.42	0.46	0.51	0.56	0.65	0.75	0.85	0.94	1.04	1.13
550						0.30	0.36	0.41	0.46	0.51	0.57	0.62	0.72	0.83	0.93	1.04	1.14	1.25
600						0.33	0.39	0.45	0.50	0.56	0.62	0.68	0.79	0.91	1.02	1.14	1.25	1.37
700							0.46	0.52	0.59	0.66	0.73	0.79	0.93	1.07	1.20	1.34	1.47	1.61
800								0.60	0.68	0.76	0.83	0.91	1.07	1.22	1.38	1.53	1.69	1.84
900									0.77	0.85	0.94	1.03	1.21	1.38	1.56	1.73	1.91	2.08
1000										0.95	1.05	1.15	1.34	1.54	1.73	1.93	2.12	2.32
1100											1.16	1.27	1.48	1.70	1.91	2.13	2.34	2.56
1200												1.38	1.62	1.85	2.09	2.32	2.56	2.79

Height	U Frame Core Areas										Width					
	150	200	250	300	350	400	450	500	550	600	700	800	900	1000	1100	1200
75	0.01	0.01	0.01	0.01	0.02	0.02	0.02	0.03	0.03	0.03	0.04	0.04	0.05	0.05	0.06	0.06
100	0.01	0.01	0.02	0.02	0.03	0.03	0.03	0.04	0.04	0.05	0.05	0.06	0.07	0.08	0.08	0.09
150	0.02	0.02	0.03	0.04	0.04	0.05	0.05	0.06	0.07	0.07	0.09	0.10	0.11	0.13	0.14	0.15
200		0.03	0.04	0.05	0.06	0.07	0.08	0.09	0.09	0.10	0.12	0.13	0.15	0.16	0.17	0.21
250			0.05	0.06	0.07	0.09	0.10	0.11	0.12	0.13	0.15	0.18	0.20	0.22	0.25	0.27
300				0.08	0.09	0.11	0.12	0.13	0.15	0.16	0.19	0.22	0.24	0.27	0.30	0.33
350					0.11	0.12	0.14	0.16	0.17	0.19	0.22	0.26	0.29	0.32	0.35	0.39
400						0.14	0.16	0.18	0.20	0.22	0.26	0.29	0.33	0.37	0.41	0.45
450							0.18	0.20	0.23	0.25	0.29	0.33	0.38	0.42	0.46	0.50
500								0.23	0.25	0.28	0.32	0.37	0.42	0.47	0.52	0.56
550									0.28	0.31	0.36	0.41	0.46	0.52	0.57	0.62
600										0.33	0.39	0.45	0.51	0.57	0.62	0.68
700											0.46	0.53	0.60	0.66	0.73	0.80
800												0.61	0.68	0.76	0.84	0.92
900													0.77	0.86	0.95	1.03
1000														0.96	1.05	1.15
1100															1.16	1.27
1200																1.39

Core only

Core area (m²) = nominal grille height (m) x nominal grille width (m)

Dimensional Data

Return Air Grilles GOX, GUX, GBX, GHX, GBF

GOX



A high free area aluminium lattice core assembly with 12.5 mm square openings.

MINIMUM SIZE 150 X 75
MAXIMUM SIZE 1200 X 1200

FREE AREA 90%.

GUX

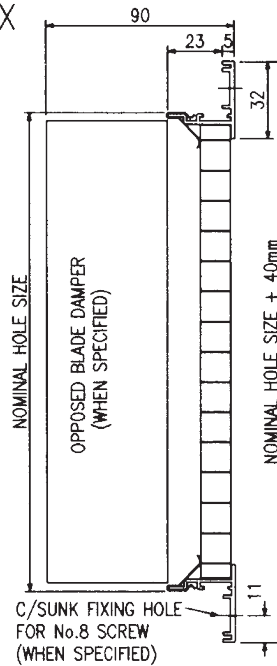


The GOX core assembly fixed into a steel U channel frame.

MINIMUM SIZE 150 X 75
MAXIMUM SIZE 1200 X 1200

FREE AREA 90%.

GBX

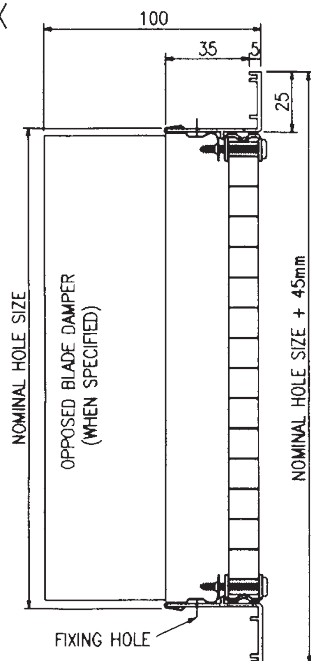


The GOX core assembly held captive within an extruded aluminium outer frame.

MINIMUM SIZE 150 X 75
MAXIMUM SIZE 2400 X 1200
MAXIMUM INDIVIDUAL CORE SIZE 1200 X 1200

FREE AREA 90%.

GHX

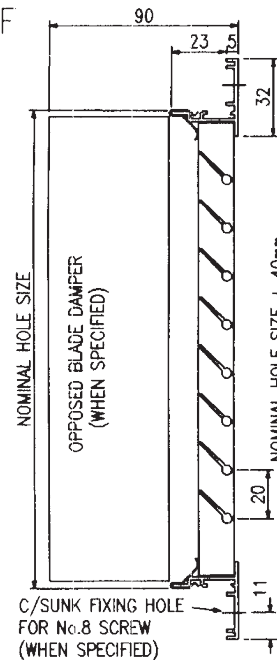


The GUX core assembly fitted into an extruded aluminium outer frame such that it can easily be removed.

MINIMUM SIZE 150 X 75
MAXIMUM SIZE 2400 X 1200
MAXIMUM INDIVIDUAL CORE SIZE 1200 X 1200

FREE AREA 90%.

GBF



An aluminium core assembly with horizontal blades set 45° and held captive within an extruded aluminium outer frame.

MINIMUM SIZE 150 X 75
MAXIMUM SIZE 1800 X 1200
MAXIMUM INDIVIDUAL CORE SIZE 400 X 600

FREE AREA 60%.

Dimensional Data

Return Air Grilles GOV, GUV, GBV, GHV

GOV



A steel core assembly with non-vision V shaped blades.

MINIMUM SIZE 150 X 75
MAXIMUM SIZE 1200 X 900

FREE AREA 66%.

GUV

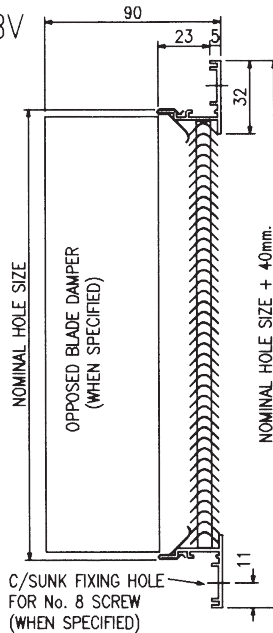


The GOV core assembly fixed into a steel U channel frame.

MINIMUM SIZE 150 X 75
MAXIMUM SIZE 1200 X 900

FREE AREA 66%.

GBV

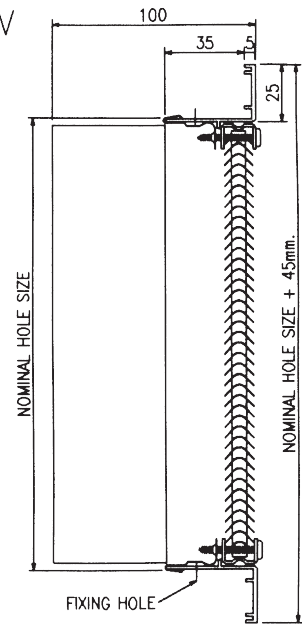


The GOV core assembly held captive within an extruded aluminium frame.

MINIMUM SIZE 150 X 75
MAXIMUM SIZE 2400 X 1200
MAXIMUM INDIVIDUAL CORE SIZE 1200 X 900

FREE AREA 66%.

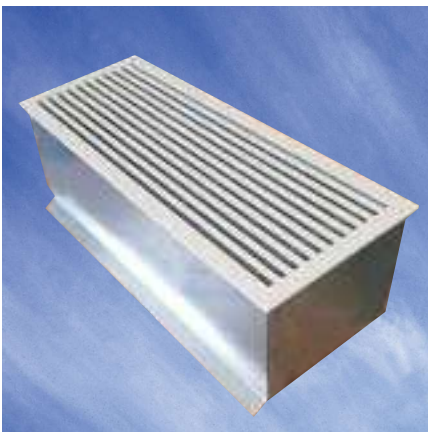
GHV



The GUV core assembly fitted into an extruded aluminium outer frame such that it can easily be removed.

MINIMUM SIZE 150 X 75
MAXIMUM SIZE 2400 X 1200
MAXIMUM INDIVIDUAL CORE SIZE 1200 X 900

FREE AREA 66%.



New options available

Colman can now offer our G series deflection and extract grilles as well as our T series linear bar grilles to be suitable for mounting on exposed circular ducts.

Complete with a solid shoe boot manufactured to suit the duct diameter required, this offers an attractive and practical solution for circular duct applications.

PRODUCT RANGES

GRILLES	DIFFUSERS	LOUVRES
Linear Bar	Linear Slot	External
Ceiling	Louvre Face	Circular
Sidewall	Sidewall	Door
Floor	Perforated Face	Screens
Computer Floor	Circular	Penthouse
Cill	Swirl	Sand Louvres
Single & Double Deflection	Ceiling	Roof Louvres
Egg Crate	Sidewall Fixed & Adjustable	
Hinged Core	Jet Flow / Nozzle	
Door Transfer	Repus Displacement Ventilation	
Security and Prison		
Supply and Extract Valves		

BESPOKE SERVICE

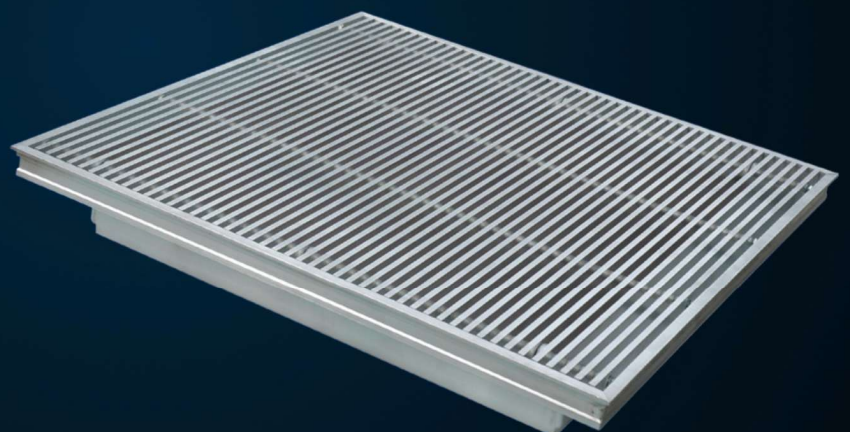
We offer a bespoke design service where standard products do not fit the requirements of the build, we also supply products in special colours and finishes including bronze, brass, gold and chrome to meet Architectural design specifications.

Mesavent.

Grilles | Diffusers | Louvres | Ductwork | Louvre Windows

Your ventilation solution partner

COLMAN
Air Distribution



Rydal Road
Carnforth
LA5 8LH

www.mesavent.co.uk
sales@mesavent.co.uk
01542 900 123